

Job Name/Location:

Tag #:

Date:

For:  File  Resubmit

PO No.:

Approval  Other \_\_\_\_\_

Architect:

GC:

Engr:

Mech:

Rep:

(Company)

(Project Manager)

**LC188HV4**  
**Ceiling Cassette Single Zone**  
 Outdoor Unit (ODU) - LUU189HV Indoor Unit (IDU) - LCN188HV4



**Performance:**

**Cooling:**

Cooling (Min-Rated-Max, Btu/h)	7,700 ~ 18,000 ~ 24,800
SEER	20.5
EER	12.5

SEER - Seasonal Energy Efficiency Ratio EER - Energy Efficiency Ratio

**Heating:**

Heating (Min-Rated-Max, Btu/h)	6,500 ~ 18,500 ~ 23,400
HSPF	10

HSPF - Heating Seasonal Performance Factor

**Electrical:**

Power Supply (V <sup>1</sup> /Hz/Ø)	208-230/60/1
MOP (A)	30
MCA (A)	20
Cooling Rated Amps (A)	15.1
Heating Rated Amps (A)	15.1
Compressor (A)	13.5
Fan (IDU+ODU) (A)	1.85
Cooling Power Input (kW)	1.44
Heating Power Input (kW)	1.95

MOP - Maximum Overcurrent Protection MCA - Minimum Circuit Ampacity

**Piping:**

Liquid (in, OD, Connection Size/Pipe Size)	1/4 / 3/8
Vapor (in, OD, Connection Size/Pipe Size)	1/2 / 5/8
Additional Refrigerant (oz/ft)	0.43
Max Pipe Length (ft) <sup>2</sup>	164
Pipe Length (no add'l Refrigerant, ft) Max	24.6
Elevation (ft)	98.4

**Features:**

- Inverter (Variable speed compressor)
- Internal condensate pump
- Swirl Wind
- Jet Cool
- IDU compatible with Multi F ODU's
- Auto restart
- Auto changeover
- Ultra-quiet turbo fan
- Optional Wi-Fi control

**Required Accessories (sold separately):**

- Cassette Grille - PT-MCHW0

**Optional Accessories (sold separately):**

- Simple Controller with Mode (White) - PREMTCC00
- MultiSITE CRC1/CRC1+ Thermostat - PREMTBVC0/PREMTBVC1
- PI-485 - PMNFP14A1
- Ventilation<sup>3</sup> Kit - PTVK430
- Wi-Fi Module - PWFMD200
- Low Ambient Kit (Cooling operation to -40°C) -PAG-HS6/PAG-HS7/PQCA0
- Aux Heater Relay Kit- PRARHO
- Base Pan Heater- PQSH1200  RS3 Remote Controller- PREMTB100

For continual product development, LG reserves the right to change specifications without notice.

© LG Electronics Canada, Inc., North York, ON. All rights reserved. "LG Life's Good" is a registered trademark of LG Corp. /www.lgdfs.ca

**Operating Range:**

**Outdoor Unit:**

Cooling (°F DB)	5 - 118
Heating (°F WB)	-4 - 64

**Indoor Unit:**

Cooling (°F WB)	57-77
Heating (°F DB)	59-81

**Unit Data:**

Refrigerant Type	R410A
Refrigerant Control	EEV
Refrigerant Charge (lbs)	3.75
IDU Sound Pressure (H/M/L) ±3 dB(A) <sup>4</sup>	41/39/36
ODU Sound Pressure Max (Cool/Heat) ±3 dB(A) <sup>4</sup>	48/52
ODU Net Unit Weight (lbs)	127.8
ODU Shipping Weight (lbs)	140
IDU Net Unit Weight (lbs)	31.5
IDU Shipping Weight (lbs)	40
Grille Weight (lbs)	7
Grille Shipping Weight (lbs)	9

**Fan:**

ODU Type	Propeller
IDU Fan Type	Turbo
Fan Speeds (Fan/Cooling/Heating)	4/5/4
Fan Quantity (ODU + IDU)	(1 + 1)
Motor/Drive	Brushless Digitally Controlled/Direct
ODU Air Circulation (CFM)	2048
IDU Air Circulation (CFM H/M/L)	460 / 424 / 388
Dehumidification (pts/hr)	3.3

**Notes:**

1. Acceptable operating voltage: 187V - 253V.
2. Piping lengths are equivalent.
3. Must comply with applicable codes for fire isolation dampers.
4. Sound pressure levels are tested in an anechoic chamber under ISO Standard 1996.
5. All communication/power cable to be minimum 18 American wire gauge (AWG), 4-conductor, stranded, shielded and must comply with applicable local and national code.
6. This unit comes with a dry helium charge.
7. Nominal data is rated 0 ft above sea level, with 25 ft of refrigerant line and a 0 ft level difference between outdoor and indoor units.
8. Power wiring cable size must comply with the applicable local and national code.
9. Must follow installation instructions in the applicable LG installation manual.
10. Multi-compatible IDUs include socket adapters for refrigerant pipe connection with Single Zone systems.



**LC188HV4**

Ceiling Cassette Single Zone

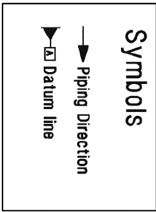
Outdoor Unit (ODU) - LUU189HV Indoor Unit (IDU) - LCN188HV4



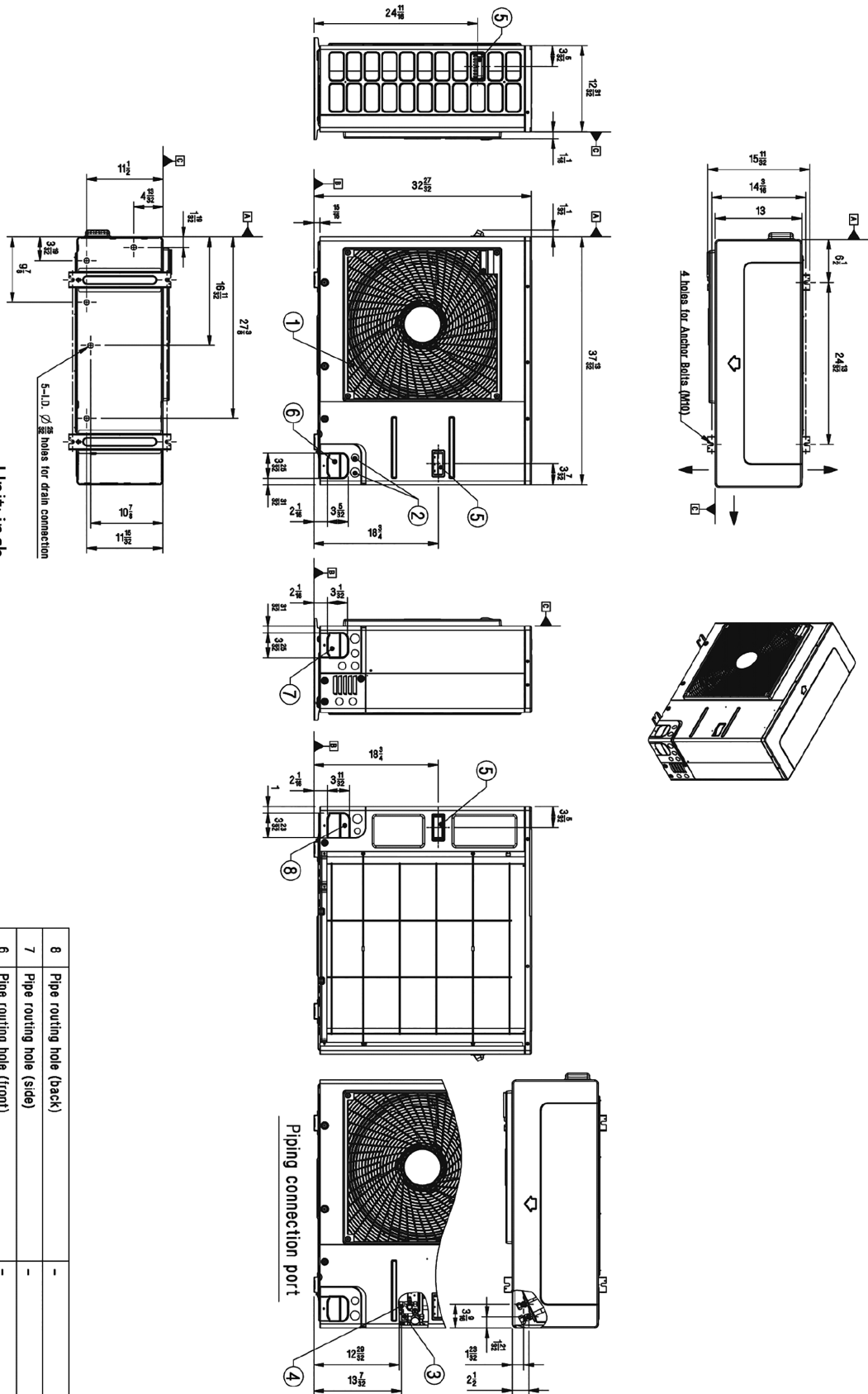
Tag #:

Date:

PO No.:



Unit: inch



No.	Part Name	Description
8	Pipe routing hole (back)	-
7	Pipe routing hole (side)	-
6	Pipe routing hole (front)	-
5	Handle	-
4	Liquid Pipe Connection	Flare joint
3	Gas Pipe Connection	Flare joint
2	Power and communication cable Hole	-
1	Air Outlet	-

**LC188HV4**

Ceiling Cassette Single Zone

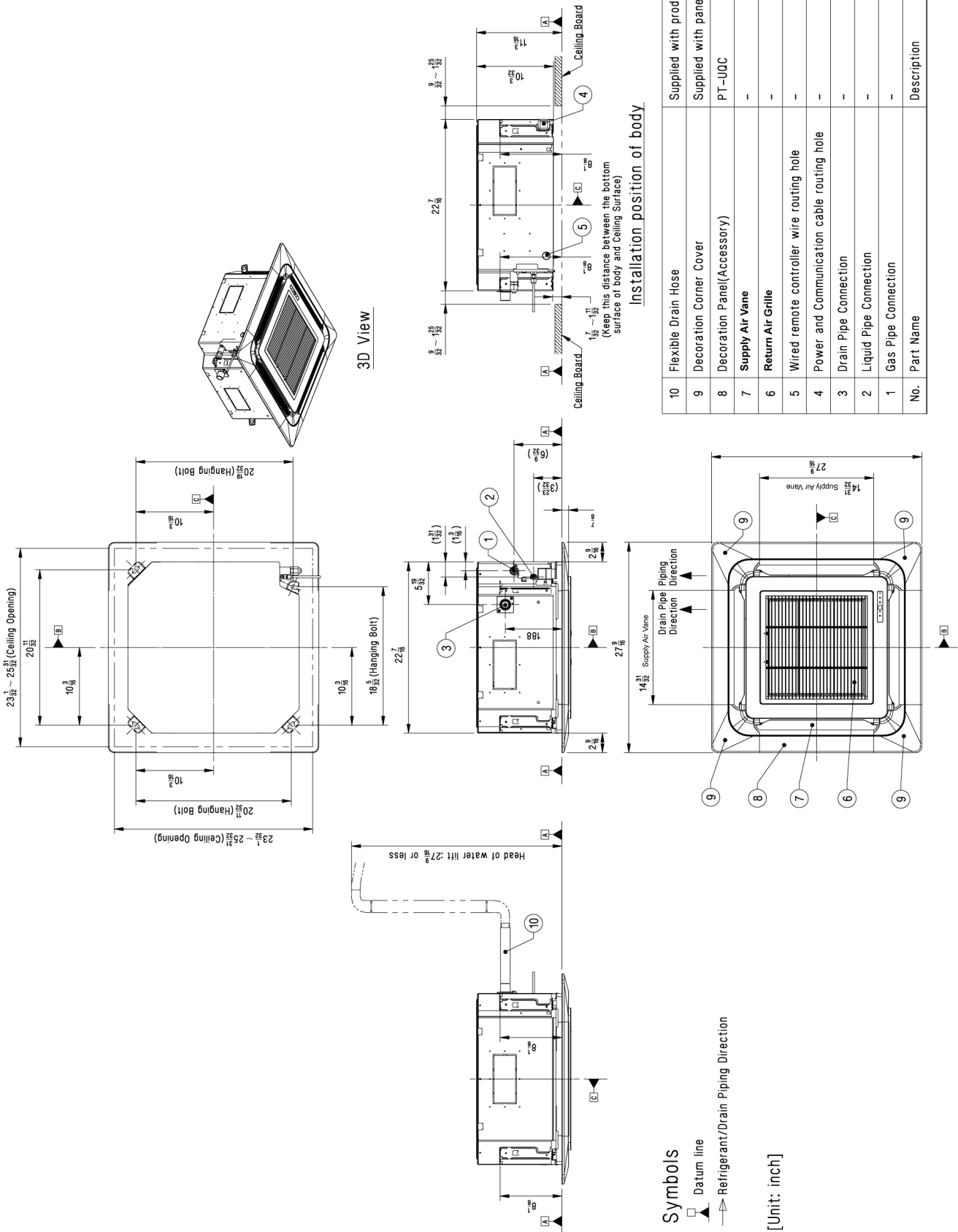
Outdoor Unit (ODU) - LUU189HV Indoor Unit (IDU) - LCN188HV4



Tag #:

Date:

PO No.:



No.	Part Name	Description
10	Flexible Drain Hose	Supplied with product
9	Decoration Corner Cover	Supplied with panel
8	Decoration Panel(Accessory)	PT-UQC
7	Supply Air Vane	-
6	Return Air Grille	-
5	Wired remote controller wire routing hole	-
4	Power and Communication cable routing hole	-
3	Drain Pipe Connection	-
2	Liquid Pipe Connection	-
1	Gas Pipe Connection	-